

THE INTERFACE BETWEEN QUARRIES AND YOUR PROJECT



# MINERAL EXPERTISE

INNOVATIVE STONE AND MARBLE



One Monte Carlo – Monaco  
Architect : Moinard & Betaille





MINERAL  
EXPERTISE

## ORGANIZATION

### OUR COMPANY

---

#### Activity

Interface from sourcing in quarries to fabrication and installation of finish product on site

#### Innovative Stone & Marble

Being a partner, a provider of innovative solutions and processes, to develop the marble know-how

#### Workforce

200 people

Inc. Engineering & Design office and a R&D division :

12 people

INNOVATIVE STONE AND MARBLE



## VERTICAL INTEGRATION STRATEGY

## OUR EXPERTISE

### MATERIAL SELECTION & SOURCING

With two factories in France and our factory in Italy and our marble specialists, we are able to source marbles and stones of all typologies and all origins.

### DESIGN + STRUCTURAL ANALYSIS

We have a long experience with complex 3D structures (special furniture, staircases, vaults, structural works)

In-house design software : AUTOCAD 3D / RHINO / GRASSHOPPER / FUSION 360°.

### ITALIAN & FRENCH FABRICATION

In-house production in our factory Laboratorio Aldo Pesetti dedicated to fine marble works in Pietrasanta – Tuscany.

In-house production in our 2 factories dedicated to large scale projects and road activity in Région Rhône-Alpes between Lyon and Geneva.

### QUARRIES

5 quarries of French marble limestones : Chandoré, Hauteville, Villebois, Farges, Pompignan.

### ON SITE INSTALLATION

With our in-house installers – 100 compagnons.

### RESEARCH & DEVELOPMENT

- Structural marble (® Eco-Mineral-Process)
- Marble on glass (® Eco-Mineral-Glass)
- Optic-fiber lighting
- Post-tensioned marble
- Marble on honeycomb (® Honeycomb Fire R & Anti-Seismic) French CSTB technical approval : ATEx – 3040 – V1 – HONEYCOMB – FR



## OUR EXPERTISE

### TYOLOGY

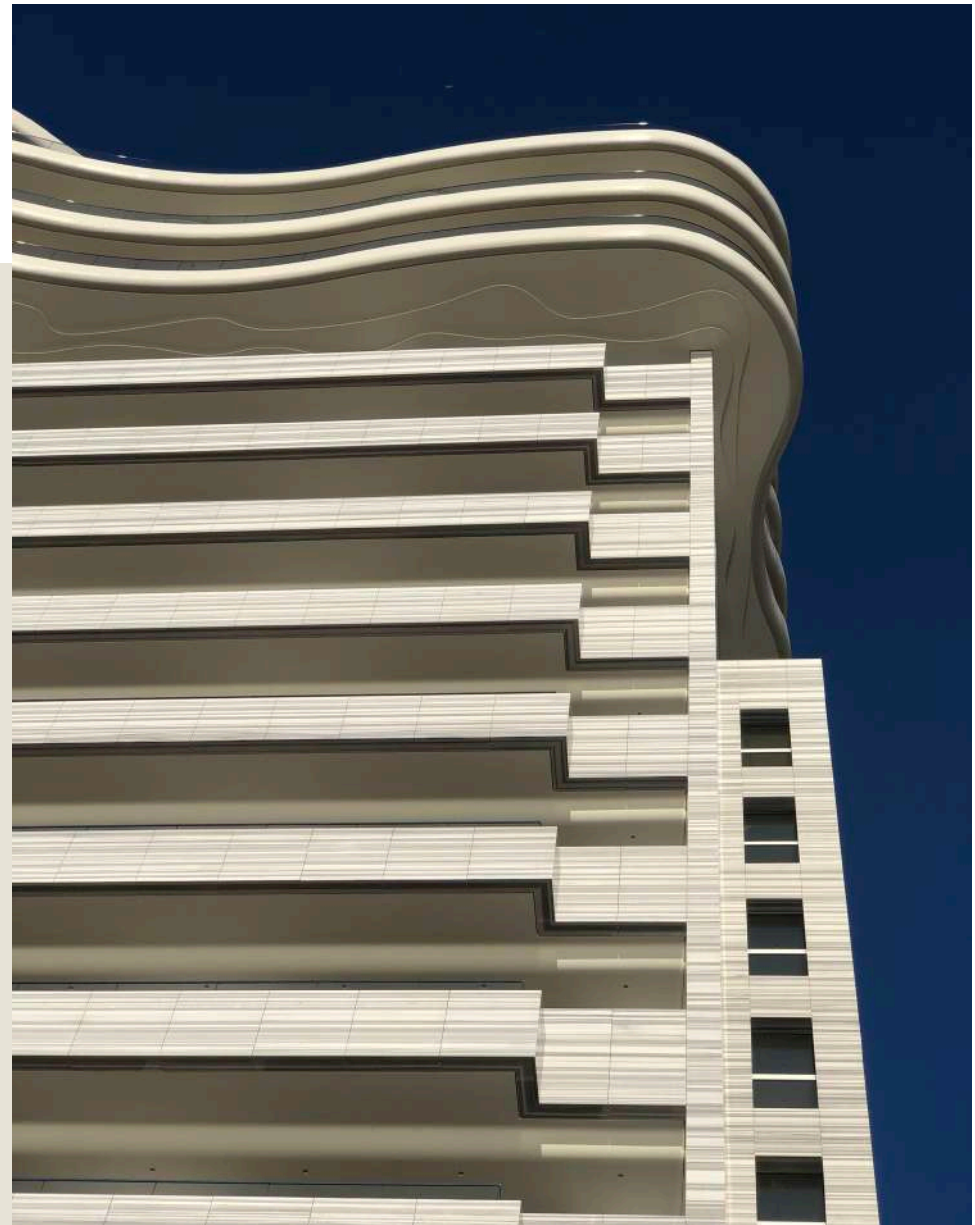
PRIVATE RESIDENCES  
OFFICE BUILDINGS  
HOTELS & RESTAURANTS  
RETAIL  
YACHTS  
SPAS

### CLIENTS

DEVELOPERS  
MAIN CONTRACTORS  
ARCHITECTS  
INTERIOR DESIGNERS  
DESIGNERS  
ARTISTS

### WORKS

ARCHITECTURE  
INTERIOR DESIGN  
FURNITURE  
MASSIVE WORKS / STONE MASONRY  
TERRAZZO



WORLDWIDE REPRESENTATION



## OUR ITALIAN FACTORY

## LABORATORIO ALDO PESETTI

Laboratorio Aldo Pesetti Srl. is our Italian branch located at the base of the Carrara mountains. With more than 70 years of experience, our factory is specialized in high-end marble manufacturing thanks to rare craftsmanship passed from generation to generation together with the latest machine technology. Our division dedicated to lightweight stone allows us to produce highly sophisticated and/or complex works while meeting the highest quality standards.

## MACHINERY :

- Anthropomorphic robot KUKA
- 5 axis CNC OMAG (two machines)
- 3 axis CNC OMEC
- Water jet cutting machine FLOW
- 3D diamond wire cutter BRETON
- 2D diamond wire cutter PELLEGRINI
- 3 axis mill saw (two machines)



[www.aldopesetti.com](http://www.aldopesetti.com)





OUR ITALIAN FACTORY | LABORATORIO ALDO PESETTI

MANAGE ALL PRODUCTION IN -HOUSE





OUR ITALIAN FACTORY | LABORATORIO ALDO PESETTI

MANAGE ALL PRODUCTION IN-HOUSE







OUR ITALIAN FACTORY | LABORATORIO ALDO PESETTI

MANAGE ALL PRODUCTION IN-HOUSE





## OUR FRENCH FACTORIES

### GUINET-DERRIAZ 1912

Guinet-Derriaz relocates and consolidates French know-how in the exploitation of ornamental rock by modernizing two production sites:

- A factory 4.0 with an area of 7.000 m<sup>2</sup>, located on a site of 9 hectares, equipped with digital machines, autonomous robots and IOT (Internet of Things).
- The second site, with an area of 4.000 m<sup>2</sup>, located on a site of 5 hectares, dedicated to the road activity and outdoor facilities.



VIDEO

[www.guinet-derriaz.fr](http://www.guinet-derriaz.fr)





OUR FRENCH QUARRIES

## GUINET-DERRIAZ 1912

Chandoré | Hauteville | Villebois | Farges | Pompignan

A historical actor since 1912, Guinet-Derriaz operates natural limestone quarries extending over an area of more than 100 hectares located in the Auvergne-Rhône-Alpes and in Languedoc regions.

The marble stones from the Guinet-Derriaz quarries have remarkable mechanical and aesthetic qualities which have earned them to be the choice of emblematic projects in France and abroad : the Esplanade du Trocadéro in Paris, the Empire State building in New York, the Meiji Imperial Palace in Tokyo.

[www.guinet-derriaz.fr](http://www.guinet-derriaz.fr)





OUR GRANITO TERRAZZO ENTITY

TERRAZZO CRAFTMANSHIP

## TERRAZZO BY MINERAL EXPERTISE

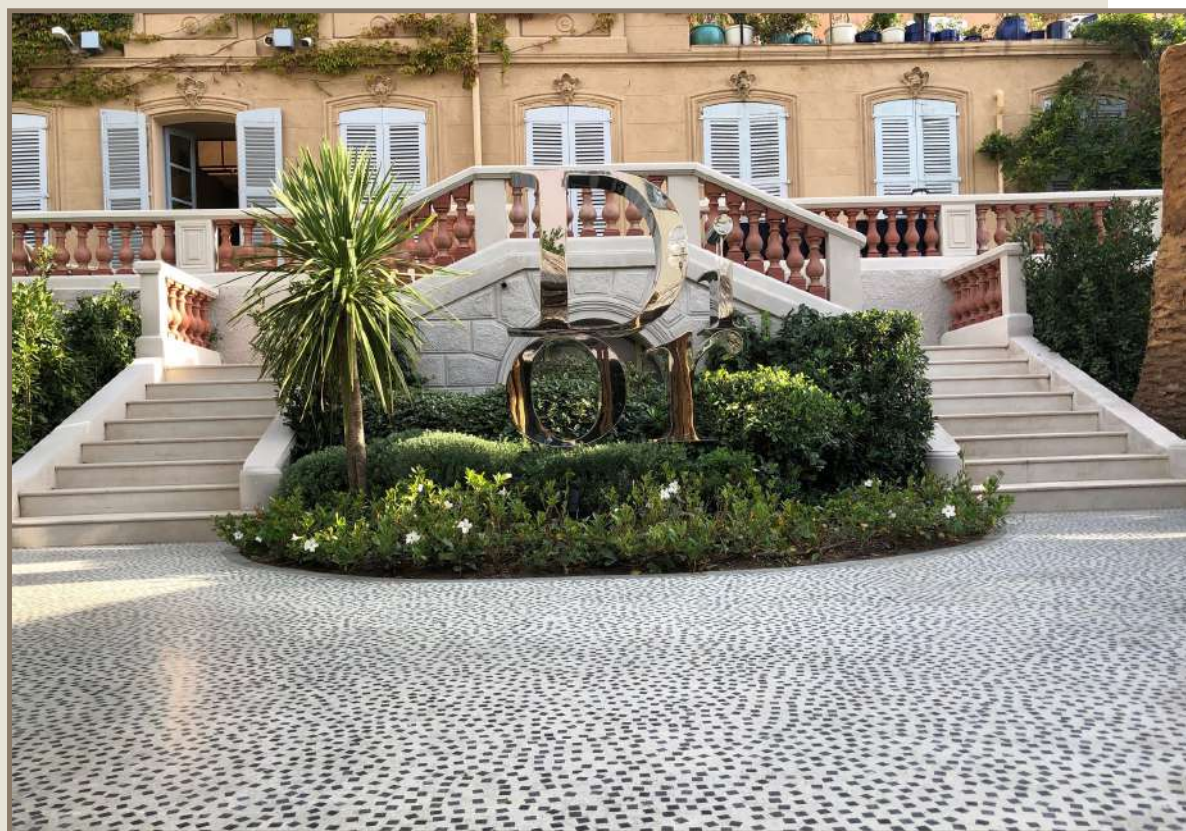
Terrazzo by Mineral Expertise uses all the techniques to work the terrazzo, whether in the traditional way of casting with a cement binder relying on the latest techniques in the matter or in the form of prefabricated tiles.

We produce our terrazzo in a workshop located in the Parisian surroundings. We provide personalized support in the selection of materials, the size and density of the aggregates as well as the colour palette, notably through the preparation of samples.

With more than 30 years of experience and references, our terrazzo branch has worked on high-end projects for luxurious brands like Christian Dior or Emilio Pucci, as well as prestigious institutions like the Musée des Beaux Arts in Lille.

[www.granito.fr](http://www.granito.fr)

Christian Dior Saint-Tropez  
Architect : Peter Marino



## OUR PARISIAN SHOWROOM

MINERAL EXPERTISE showroom is a real tool for architects and interior designers with more than 300 marbles and stones displayed as well as a large range of finishings.

MINERAL EXPERTISE acts as a driving force and plays an advisory role in selecting the appropriate materials for each project.

Through its technical consulting service, MINERAL EXPERTISE guides clients in every phase of the project, all the way from the selection of the materials to post-sale service for complete customer assistance.





## OUR PARISIAN SHOWROOM

MINERAL EXPERTISE also provides a unique offer to interior designers by producing any textured finish and as far as reproducing your own pattern on marble.

Thanks to our extensive experience in sourcing, we put at disposal our knowledge of quarries and minerals around the world and a wide network of suppliers.

FINISHING & SOURCING





## INSTALLATION ON SITE

MINERAL EXPERTISE has two hundreds in-house installers supervised by site managers, themselves being led by project managers. This own organization allows us to have dedicated teams by project and this on an international scale.





The in-house R&D department is at the heart of Mineral Expertise group's DNA.

A catalyst of ideas, where everything begins: a place in which to explore the material, testing its expressive qualities, developing new dimensions, condensing conceptual study and experimentation with forms, structures and aesthetics. Thanks to remarkable investments in R&D and the search for new stylistic and manufacturing trends, MINERAL EXPERTISE can constantly offer to the market players new stimuli and new design ideas.

- OPTIC-FIBER LIGHTING
- ® ECO-MINERAL-GLASS
- ® ECO-MINERAL-PROCESS
- STONE STICKS
- POST-TENSIONED STONE
- ® HONEYCOMB FIRE R & ANTI SEISMIC / CLADDING METHOD (ATEX CERTIFICATION)



## ® ECO-MINERAL-GLASS

- Natural stone panels assembled on large glass modules
  - Construction of curtain walls (2 materials with one same installation technique)
  - XXL panels
  - Transparency / Solar Factor
- Mineral Expertise collaborated with AGC, the world leader in glass, in the development of marble on glass.
  - AGC recently supplied the facades of the new Ronald O. Perelman Performing Arts Center (PAC) in New York City built on Ground Zero- World Trade Center.



Architect : REX & Associates NY



## ® ECO-MINERAL-PROCESS

---



By increasing the rigidity of the marble, this completely new process allows us to realize the most complex shapes.

- High stiffness/density performance
- Dynamic load : 200 daN

This technique is inspired by the Renaissance «commesso», widely used for centuries, but applied to our time thanks to algorithms, artificial intelligence and the power of our new drawing softwares (patented process).



UNPRECEDING RESISTANCE

### R & D | ® ECO MINERAL PROCESS

#### DENSITY RELATED STIFFNESS PERFORMANCE



ALUMINIUM



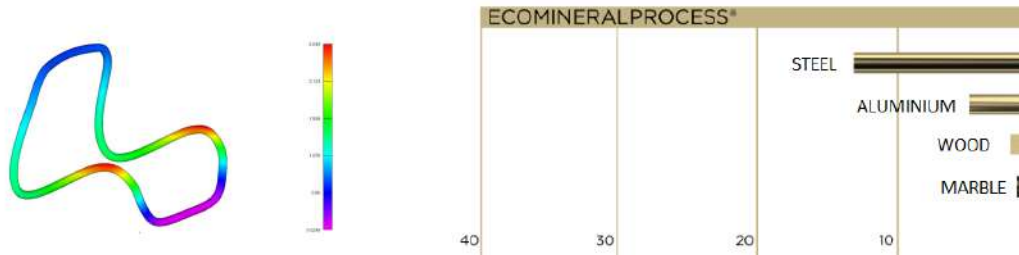
STEEL



® ECO-MINERAL-PROCESS

200DaN IN DYNAMIC LOAD  
STIFFNESS DESIGN, CONSTRAINT AND DISPLACEMENT

#### FLEXION/DENSITY PERFORMANCE INDEX



KEY ELEMENTS:  
EMP® is characterized by its high resistance to the flexion (4 times greater than steel 40 times higher traditional marble)





R & D | ® ECO MINERAL PROCESS

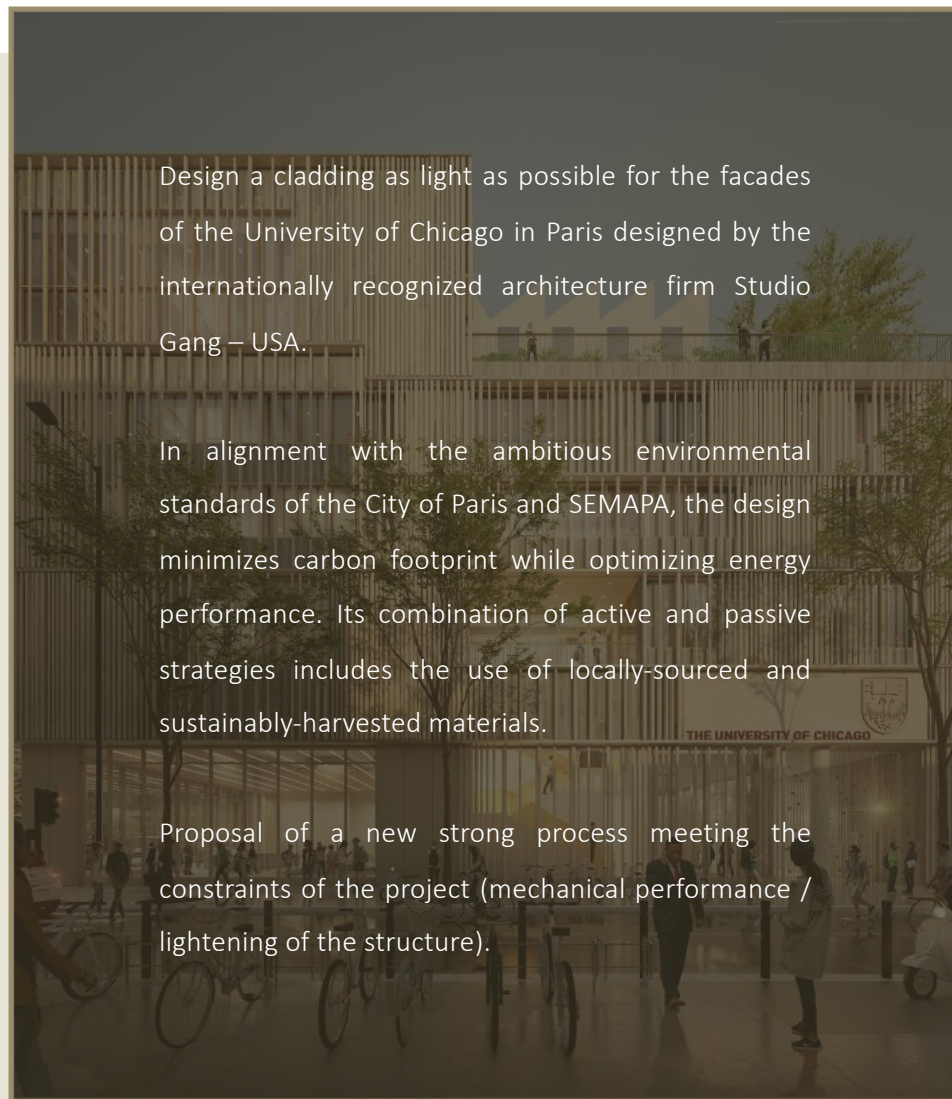
STONE STICKS



Design a cladding as light as possible for the facades of the University of Chicago in Paris designed by the internationally recognized architecture firm Studio Gang – USA.

In alignment with the ambitious environmental standards of the City of Paris and SEMAPA, the design minimizes carbon footprint while optimizing energy performance. Its combination of active and passive strategies includes the use of locally-sourced and sustainably-harvested materials.

Proposal of a new strong process meeting the constraints of the project (mechanical performance / lightning of the structure).

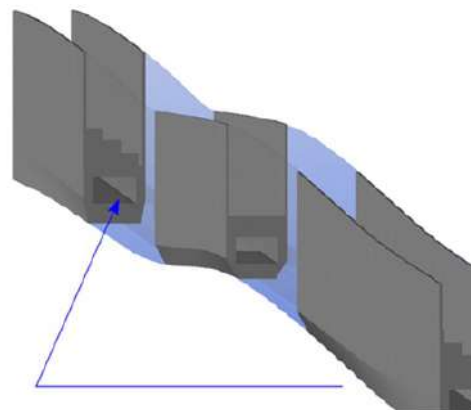




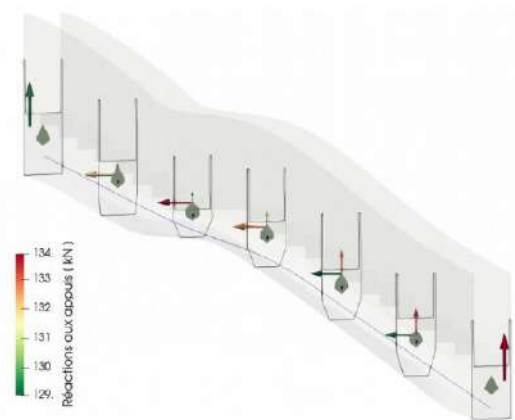
## ® POST-TENSIONED STONE

By post-tensioning the stone, prefabricated panels can be made which eliminate either the secondary steelwork and subsequent site operations or avoid the need for pre-cast concrete panels.

STRUCTURAL MARBLE



Geometry modification  
Recess of the central part





# ® HONEYCOMB FIRE R & ANTI SEISMIC

Certification of our Honeycomb FR cladding method on metal frames: ATEx approval (ATEx 3040 V1 HONEYCOMB FR) from the French Center of Science and Construction Technique.

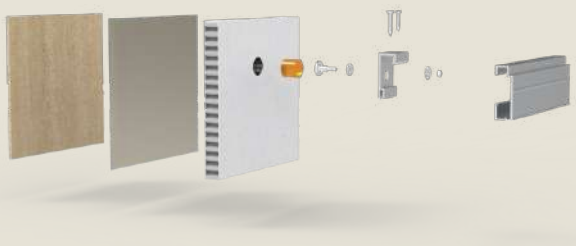
A process allowing to install panels in public access buildings (PAB) and on buildings over 28 meters high in France.

Used for the facades of the Maybourne Riviera Hotel.

Now approved for suspended ceilings in seismic areas.



ATEX CERTIFICATION



Maybourne Riviera Hotel Architect : Wilmotte & Associés



Apple Headquarters- Cupertino- USA  
Massive handrail detail

Architect : Foster + Partners





SPA- Four Seasons- London  
Marble mosaic

Architect : Joseph Caspari







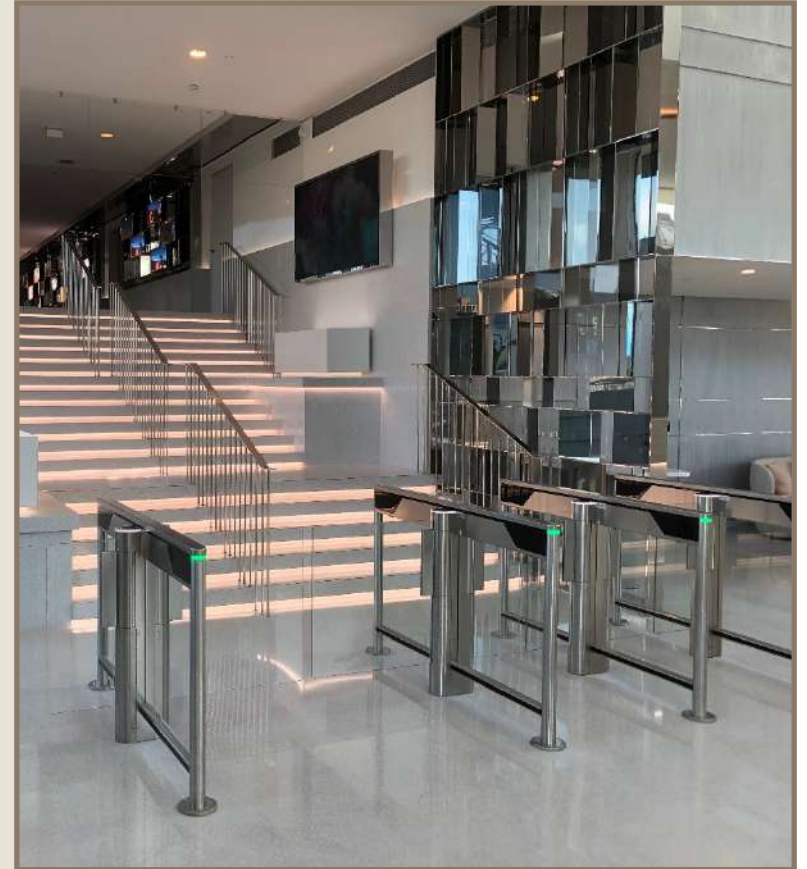
Hermès Store - Nice  
Terrazzo & Mosaic

Architect : RDAI





Christian Dior Headquarters- Paris  
France Granito | Terrazzo



Architect : Laure Meriaud  
& Simon Rodriguez Pagès





Emilio Pucci Store - New York  
France Granito | Terrazzo

Interior Designer : Joseph Dirand





## Stella Tower - Monaco

Facade work – Installation of 24.000 m<sup>2</sup> of glass paste





Monaco Project  
Exterior & interior cladding and massive work

Architect : Thierry Despont N.Y. J





## Hôtel de Paris- Monaco

Public areas | Grey Flower, Dark Emperor & Statuario

Interior designer : Affine Design





Private Residence - Paris  
Statuario, Sahara Noir & Four Seasons

Interior Designer : Tristan Auer





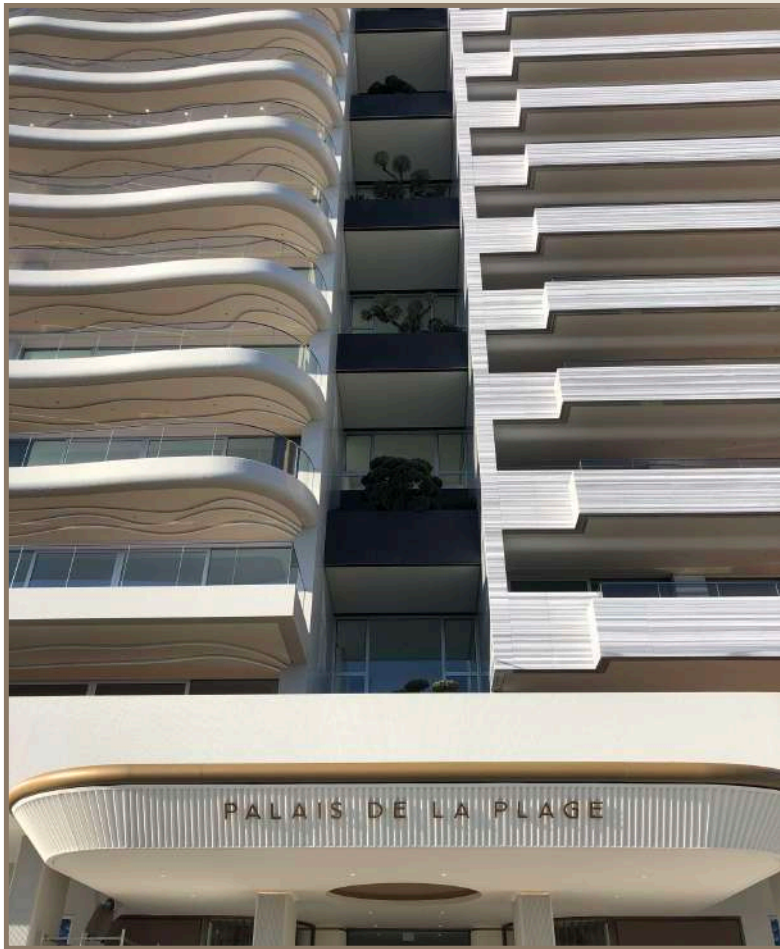
One Monte Carlo - Monaco

Architect : Rogers Stirk Harbour + Partners

Interior design : Moinard & Betaille



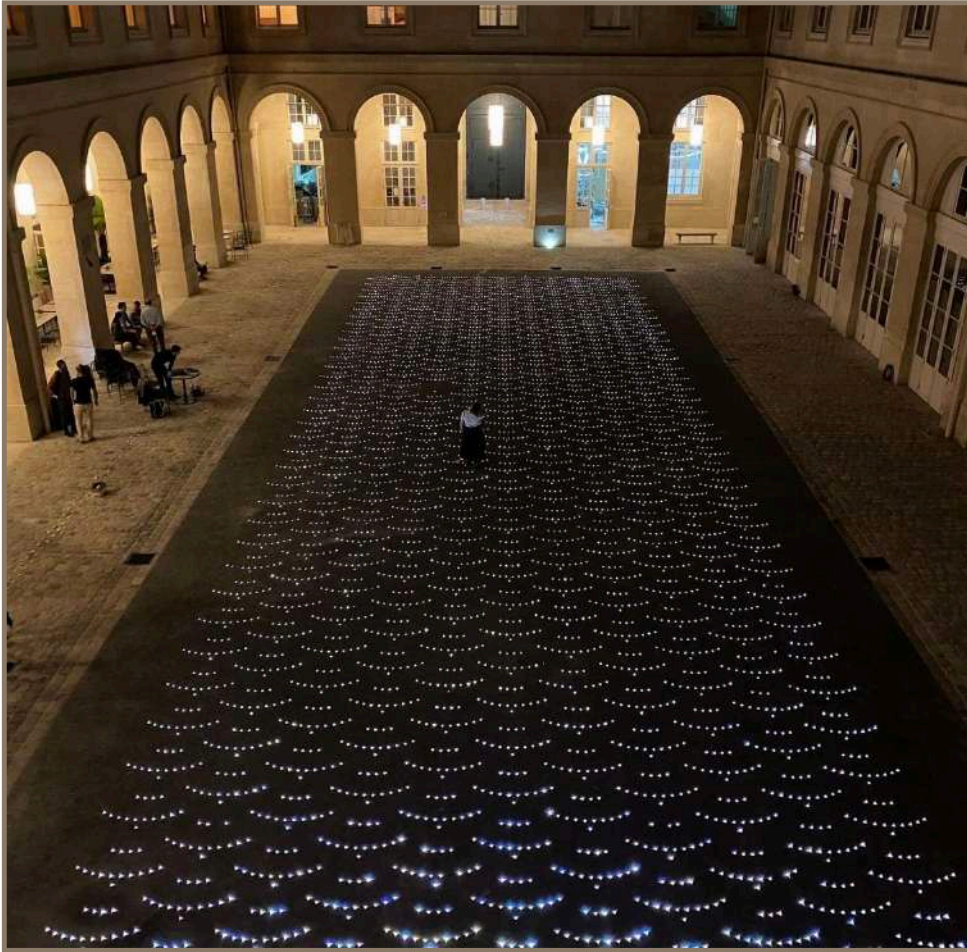




Palais de la Plage - Monaco  
Facade in Striato Olimpico & Bathrooms in Silk Georgette

Architect : L'Archi-tecte





## Hôtel de la Marine - Paris

Peacock-shaped black Saint Henry paving with integrated led

Architect : Moatti Rivière





Hotel Maybourne Riviera - Roquebrune  
Terrazzo & Travertine Osso

Architect : Wilmotte & Associés





AD Intérieurs 2019 «Métamorphoses» - Paris  
Rouge des Carpates

Interior design : Festen





«Marbrée» exhibition- Maison Dentsu Paris  
Bamboo Collection- Interplay of Marbles

Designer : Isabelle Stanislas





«Allégories» exhibition- Hôtel de Soubise Paris  
*Loggia* armchair awarded with the French Design 100 Prize &  
Collectible Furniture made of marbles

Designer: Pierre Gonalons





R5 Diamant- To celebrate the iconic R5 model's 50th anniversary  
Steering wheel in Noir Grand Antique developed with <sup>®</sup>Eco-Mineral-Process

Designer: Pierre Gonalons





Private Residence – Neuilly sur Seine  
Crystal White with optic-fiber backlighting

Architect : K&Y Architecture  
Kelly Boukobza







Private Residence – Paris  
Breccia Aurora & Beige Fine

Architect : Francesco Balzano

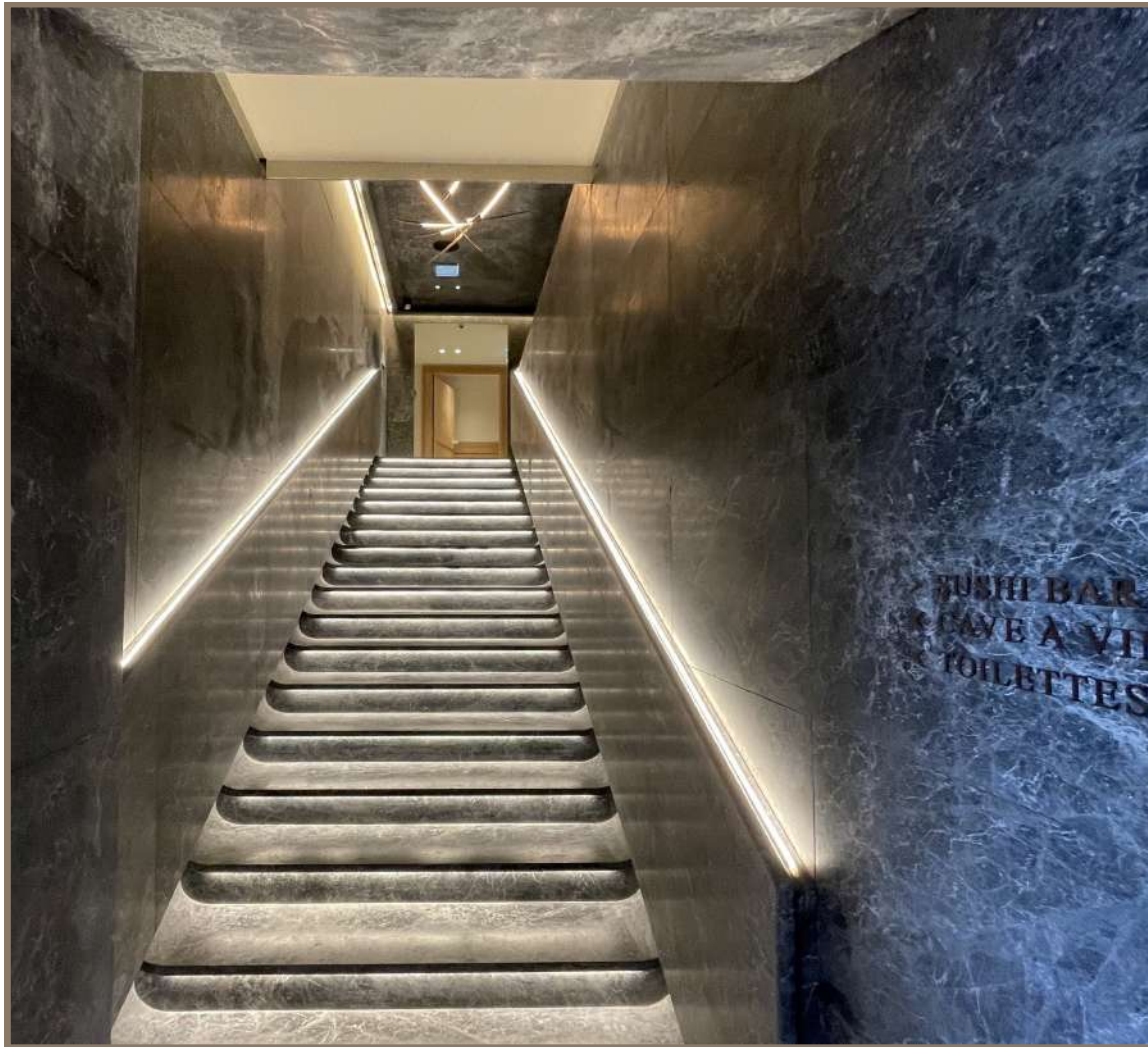




Private Residence – Paris  
Beige Fine

Architect : Francesco Balzano





Niwaki Restaurant – Palais de la plage – Monaco  
Tundra Grey

Architect : Rashid Rivani





Office furniture  
Desk in Silverwave & Fireplace in Calacatta Vagli Oro

Architect: Agence Cochet





Villa Portofino – Monaco  
Facade work in Hauteville

Architect : Emmanuel Deverini





Palais Honoria – Monaco  
Facade work in mosaic

Architect : Jean-Pierre Lott





Residential Project – Paris  
Calacatta Vagli & Travertine

Architect : Isabelle Stanislas





Private Residence – Paris  
Onyx Artic Gold

Architect : EDO – Alexandre Danan







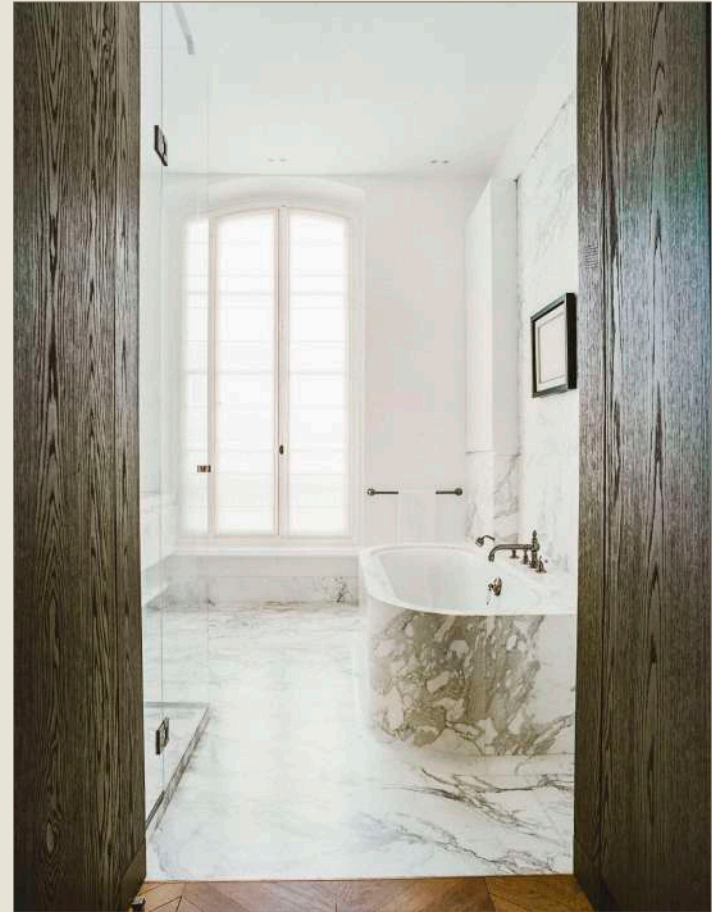
Residential Project – Paris  
Green Cippolino & Travertine Osso

Architect : Clavès





Private Residence – Paris  
Taj Mahal & Calacatta Oro



Architect : Isabelle Stanislas



## CONTACT



## SHOWROOM

174, rue du Temple – 75003 PARIS  
+33 (0)1 75 57 02 24  
info@mineralexpertise.com  
mineralexpertise.com

## FOLLOW US

